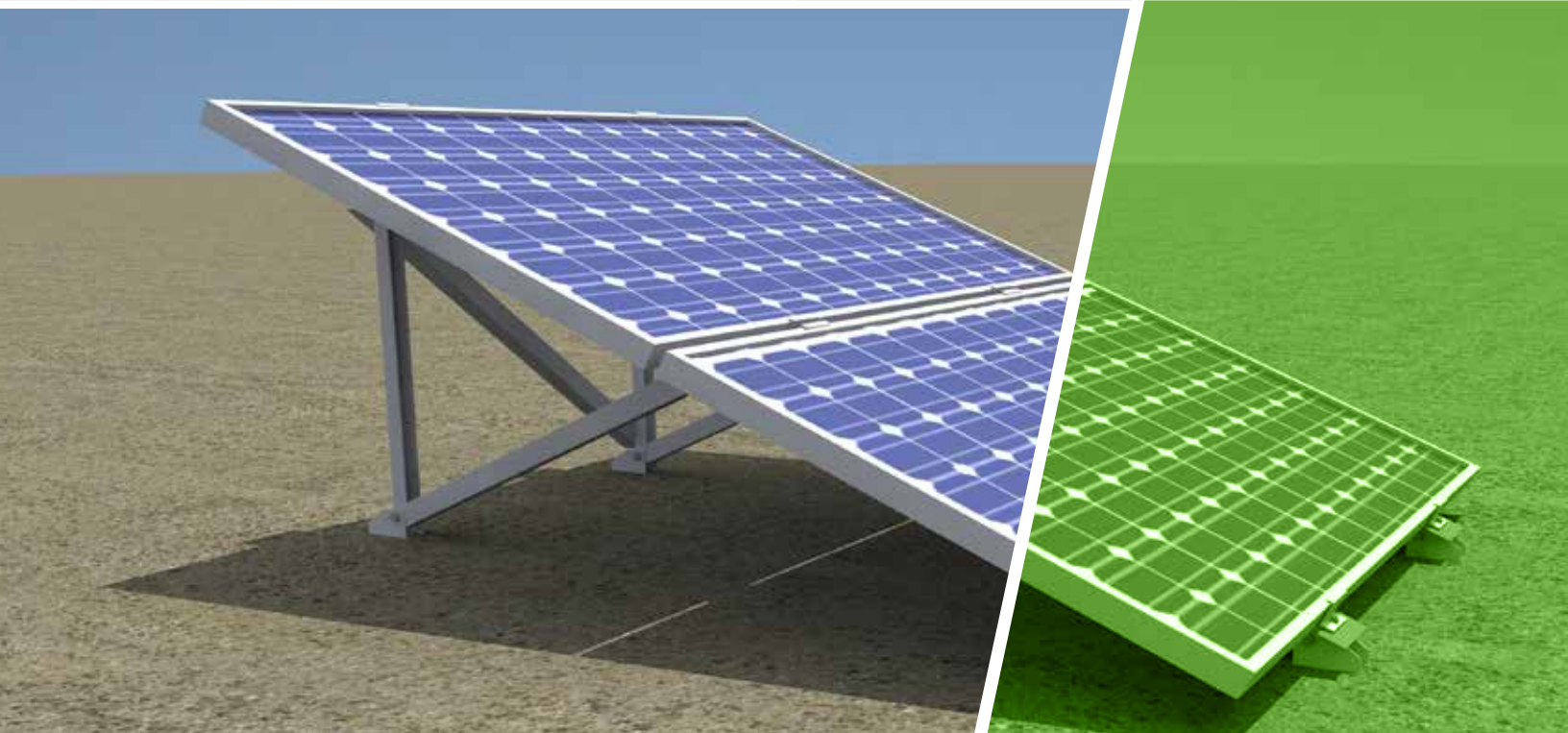


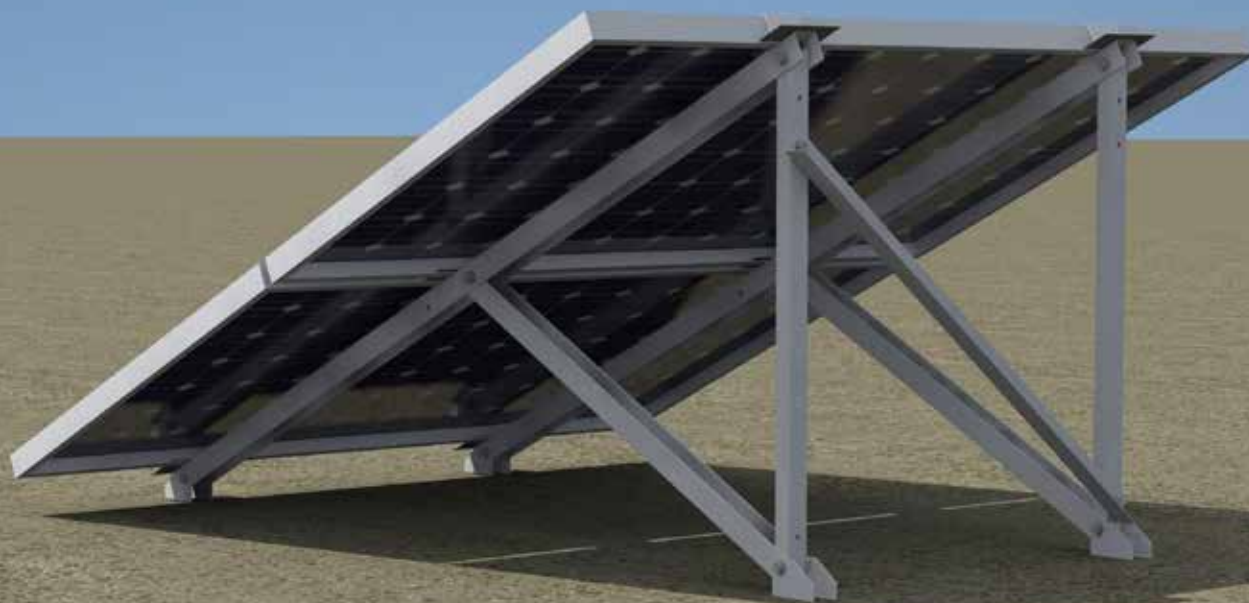
/ KIVO COMPACT®

Fast deployed Mounting system suitable for Flat Roof installations



KIVO Compact®

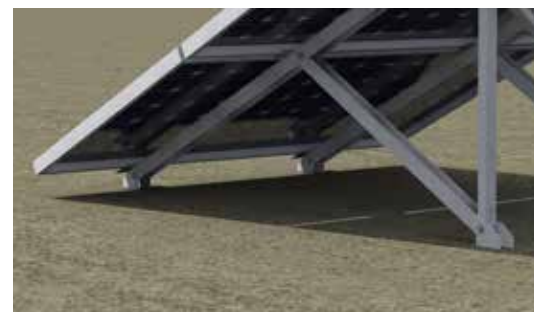
Fast deployed Mounting system suitable for Flat Roof installations



The KIVO Compact®, a versatile, self-deployed Mounting system suitable for Flat Roof installations.

The KIVO Compact® Single Pile mounting system is made of high quality materials (cold roll formed pre-galvanized steel profiles).

- ▶ The KIVO Compact® provides a pre-assembled, unfold-type PV mounting systems, allowing for quick installation of a reliable and complete mounting system with ease.
- ▶ The KIVO Compact® allows for flexible fixing methods; with roof anchoring or concrete counter weights.
- ▶ The Versatile design of the KIVO Compact® is engineered for Utility-scale roof- and can be used for off-grid leisure applications in smaller configurations. The KIVO Compact® is an available, in-stock item.
- ▶ All products are made of high-quality materials and are covered by a 20 year warranty.



Advantages

- Made of high quality steel
- Designed to any type of Installation
- Minimum number of parts
- Double type and size of bolt, nut and washers
- Patented fast clamping system
- Thermal expansion does not limit length of tables
- 20 Years Warranty

KIVO Compact®

Fast-deployed Mounting system suitable for Flat Roof installations

Product

The KIVO Compact® offers quick and easy installation. Designed for Roof PV installations and Off Grid applications.



KIVO Compact® | Specifications

Application	Flat Roofs, Off-Grid Applications
Grounding	Chemical/Mechanical anchors (not included), concrete footings (using rails)
Material	Cold roll-formed pre galvanized steel profiles According to EN 1 01 47 – S320 + Z, or post Galvanized steel profiles
Tilt Angles	25° degrees
Panel arrangement	Double Landscape
Module Compatibility	Framed modules
Average Installation Rate	Up to 20 kWp/man per day**
Accessories	Aluminum middle and end clamps: EN AW-6063 T66
Connection type	Grade 8.8 (galvanized) M12 and M8 (clamps) according to DIN933, 125, 9021, 985, 912 EPDM rubber against Electrolytic corrosion
Packaging	30kWp / Europallet
Unit Weight	5kg
Warranty	20 years

** Actual installation rate may vary based on conditions and other factors.

Norms & Standards

Eurocode 1:

- Actions on structures (EC1, ENV 1991 1-1, 1--3, 1-4),
- Part 1-1: General actions – Densities, self-weight and imposed loads
- Part 1-3: General actions – Snow loads
- Part 1-4: General actions – Wind actions

Eurocode 3:

- Design of steel structures (EC3, ENV 1991-1-1, 1-3)
- Part 1-1: General rules and rules for buildings
- Part 1-3: General – Cold formed thin gauge members and sheeting
- Part 1-8: General – Design of joints
- Part 1-10: General – Material toughness and through thickness assessment

Eurocode 8:

- Design of structures for earthquake resistance (EC8, ENV 1998-1-1)
- Part 5: Foundations, retaining structures and geotechnical aspects
- Part 1: General rules, seismic actions and rules for buildings
- National Norms for Earthquake Resistance
- Other Regional Standards where Eurocodes not applicable.

