

# LandStar series Solar Controller



LandStar series solar charge controller that adopts the most advanced digital technique and operates fully automatically. The Pulse Width Modulation (PWM) battery charging can greatly increase the lifetime of battery.

## Application:

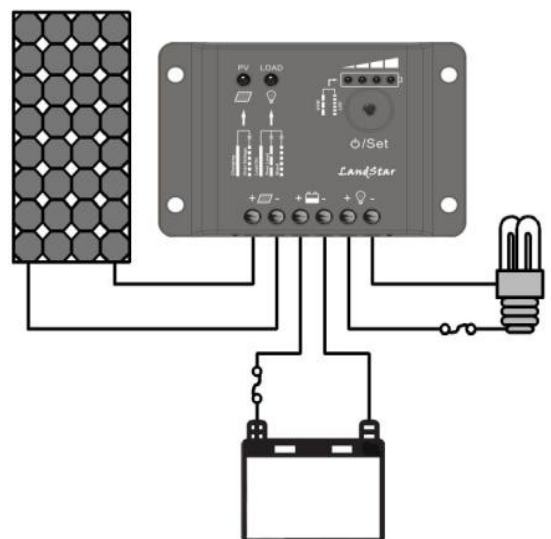
Ideal for off-grid solar system that loads are normally on or controlled by manual

- ★ Solar traffic system
- ★ Unattended CCTV Equipment
- ★ Solar home system
- ★ Wild automatic detection equipment



## Features:

- ◆ High efficient Series PWM charging
- ◆ Battery type option
- ◆ LED indicators indicate battery voltage state
- ◆ Use MOSFET as electronic switch
- ◆ Temperature compensation
- ◆ Electronic protection: over charging, over discharging, overload, and short circuit
- ◆ Battery reverse polarity protection



# LandStar Series Solar Controller

Electrical parameters	LS0512
System voltage	12V
Max. Battery Voltage	16V
Rated Battery Current	5A
Charge Circuit Voltage Drop	≤0.26V
Discharge Circuit Voltage Drop	≤0.15V
Self-consumption	≤6mA

Battery Voltage Parameters (temperature at 25°C)			
Battery charging setting	Gel	Sealed	Flooded
Equalize Charging Voltage	—	14.6V	14.8V
Boost Charging Voltage	14.2V	14.4V	14.6V
Float Charging Voltage	13.8V	13.8V	13.8V
Low Voltage Reconnect Voltage	12.6V	12.6V	12.6V
Low Voltage Disconnect Voltage	11.1V	11.1V	11.1V
Equalize Duration	—	2 hours	2 hours
Boost Duration	2 hours	2 hours	2 hours

Environmental parameters		Mechanical Parameters	
Working temperature	-35°C to +55°C	Overall dimension	97mm x 66mm x 25mm
Storage temperature	-35°C to +80°C	Mounting dimension	86mm x 44mm
Humidity	10%-90% NC	Terminal	2.5mm <sup>2</sup>
Enclosure	IP30	Net weight	0.05kg



BEIJING EPSOLAR TECHNOLOGY CO.,LTD.  
 Add: BLDG #18, CO.PARK ,NO.8 HEYING ROAD ,  
 CHANGPING DISTRICT, BEIJING, CHINA  
 Tel: 010-82894962 / 82894112  
 Fax: 010-82894882  
 E-mail: info@epsolarpv.com

